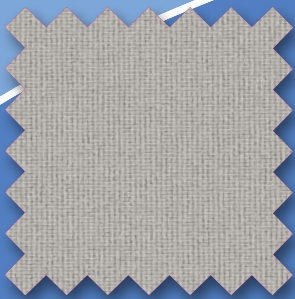


WeatherMAX 3D

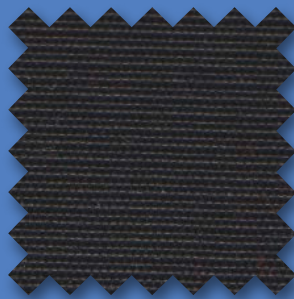
What Fabric Can Do™



LIGHT CHARCOAL 3D334 X



MIST 3D468 X



BLACK 3D355 X



WHITE 3D371 X



The Future of Fabric
is Taking Shape

Introducing WeatherMAX 3D, the newest addition to Safety Components' outdoor fabric line. WeatherMAX 3D utilizes the same fiber technology that has powered WeatherMAX fabrics to be durable with long-term UV and fade resistance. However, conventional marine fabrics are inherently dimensionally stable and therefore only move on two axes, causing significant problems in fitting difficult patterns or forms. The unique construction of WeatherMAX 3D produces high levels of elasticity to provide flexibility in three dimensions and form-fit virtually anything now and in the future. Under tension WeatherMAX 3D stretches up to 20% and when tension is released it contracts to its original size.

WeatherMAX 3D offers enhanced UV protection, water resistance, breathability and will form to fit any outdoor canvas imaginable. WeatherMAX 3D is soft and pliable, yet it is highly resistant to rips, tears and abrasion. WeatherMAX 3D is ideal for yacht sun shades, protective engine or seat covers or any application that demands outdoor durability and elasticity. While WeatherMAX 3D offers water shedding properties it is not intended to provide the same level of water resistance as our WeatherMAX 80 fabric.

Care Instructions

WeatherMAX fabrics may be spot washed using a soapy solution of a mild detergent and lukewarm water. Rinse thoroughly with clean water to remove soap and allow to air dry. For mildew stains, prepare a solution of (1) cup bleach plus (½) cup of mild detergent per gallon of water. Spray on the entire area and allow soaking. Rinse with clean water and allow to air dry.

WeatherMAX 3D Warranty

The limited warranty covers only the fabric being unserviceable because of loss of strength and/or color from normal conditions of exposure. That includes sunlight, mildew and atmospheric chemicals. Labor and installation supplied by the fabricator and/or installer are not covered. The consumer is responsible for normal care, cleaning and maintenance of the fabric.

- * The warranty runs for 5 years from the date of original purchase for WeatherMAX 3D.
- * Safety Components will supply new fabric, free of charge, to replace the unserviceable fabric.
- * Call your dealer who will contact Safety Components to request fabric replacement.
- * A valid copy of the original invoice, showing date of purchase, is required for fabric replacement.
- * This warranty gives you specific legal rights and you may also have other rights which vary from state to state.

See [website](#) for additional warranty details.



WeatherMAX is a registered trademark of Safety Components, Inc.
WeatherMAX 3D is a patent pending fabric.
SaturaMax is a registered trademark of Unifi, Inc.

WeatherMAX 3D

Properties

Weight ASTM D3776 (oz/yd ²)	7.2
Put Up (yds)	75
Width Selvedge Edge (in)	61 - 62
Tensile Strength ASTM D5034 (lbs)	W × F 225 × 290
Stretch (percent)	W × F 12 × 20
Tongue Tear ASTM D4533 (lbs)	W × F 30 × 20
Recovery BS 4294:1968 - 3 kg (percent)	L × W 100 × 100
Spray Rating AATCC 22 (scale)	100
Hydrostatic Test AATCC 127 (in)	15
Colorfastness to Light AATCC 169 (grade 1 - 5) (1500 accelerated hours)	4 - 5
Breathability Test ASTM D 737 (125 Pa)	42

Specifications

- * Made of 100% SaturaMax® for ultra-high UV resistance.
- * Finished with DWR (no coating).
- * Made in U.S.A.

